

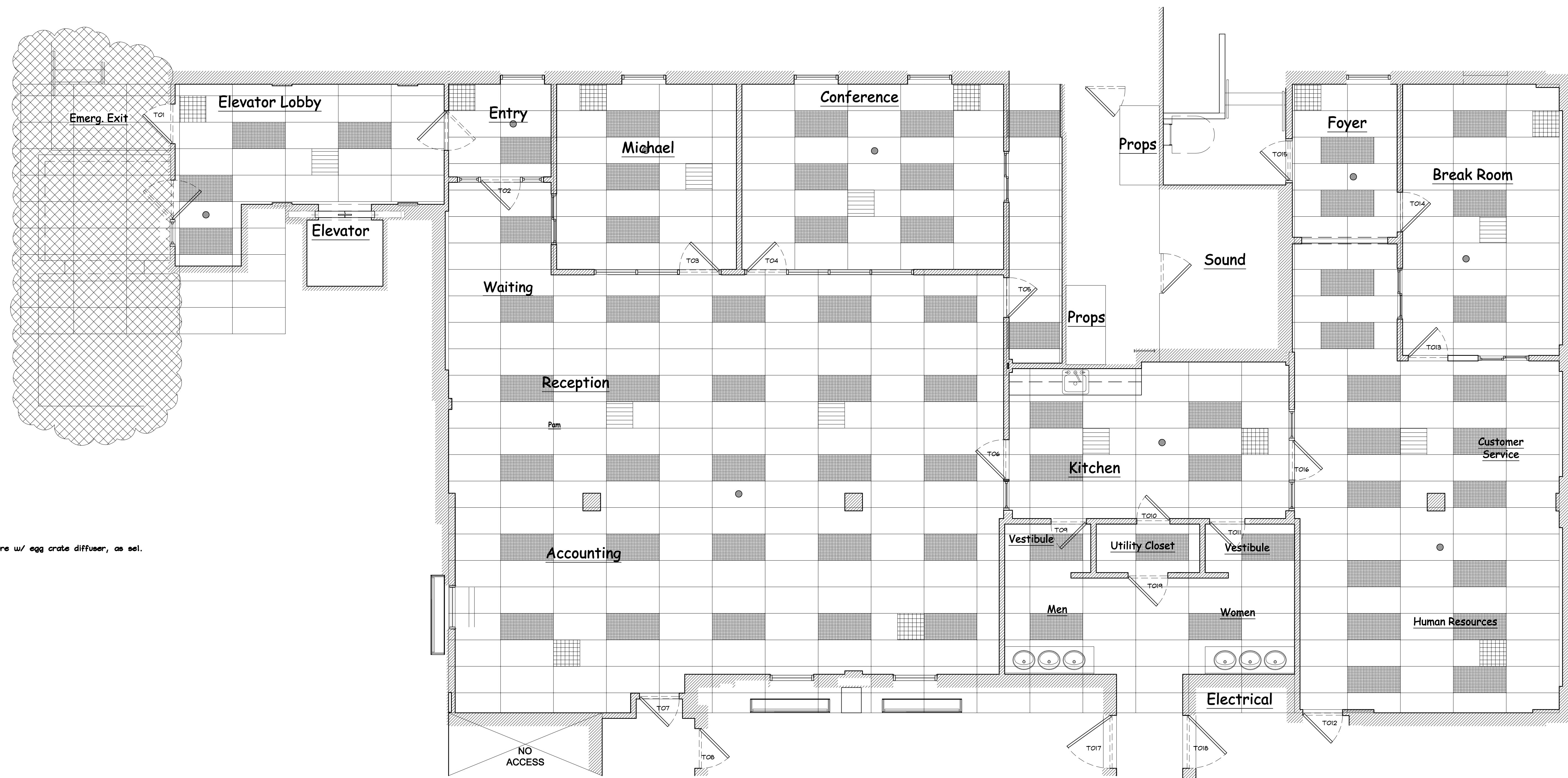
the office
PAPER COMPANY

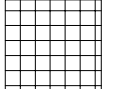

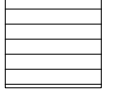

Set: The Office - Paint Plan

Greg Daniels, Exec. Prod.	Ben Silverman, Exec. Prod.
Ken Kwapis, Director	Howard Klein, Exec. Prod.
Kent Zbornak, Prod. UPM	Michael Gallenberg, Prod. Des.
Angie Hamilton, Producer	Matt Flynn, Asst. Director
Randall Einhorn, S.P.	Steve Rosline, Asst. Director
Dale Alexander, Key Grip	Bobby Bednar, Crane Coord.
Brad Lipsch, Gaffer	Phillip Shea, Propmaster
Liz Ryan, Asst. Director	Jeff Beck, Set Designer
Billy Arter, Transportation	

Stage Loc: Stage 5
 Chandler Studios
 Date: 4/12/2008
 Sheet: 1 of 6
 Scale: 1/4" = 1'-0"

NBC REVELLE DEEDLE DEE PROD.






-  Return Air Register
-  2 x 4 Fluorescent light fixture w/ egg crate diffuser, as sel.
-  Supply Air Register
-  Heat Sensor

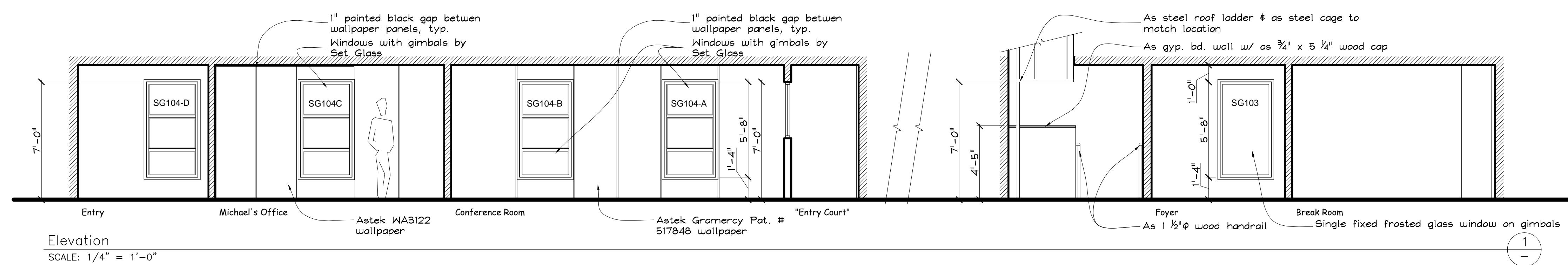
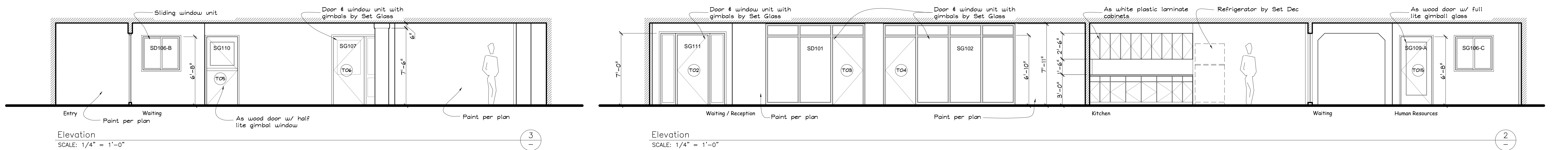
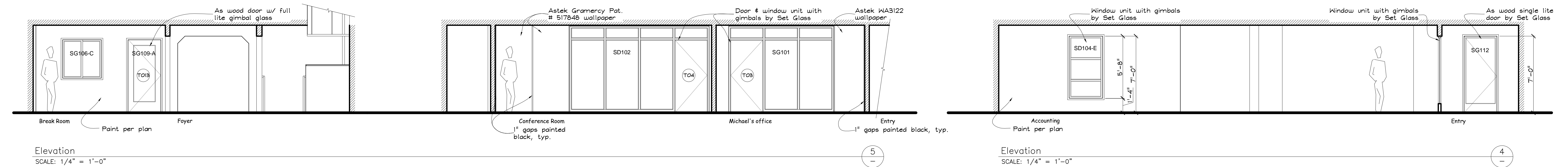
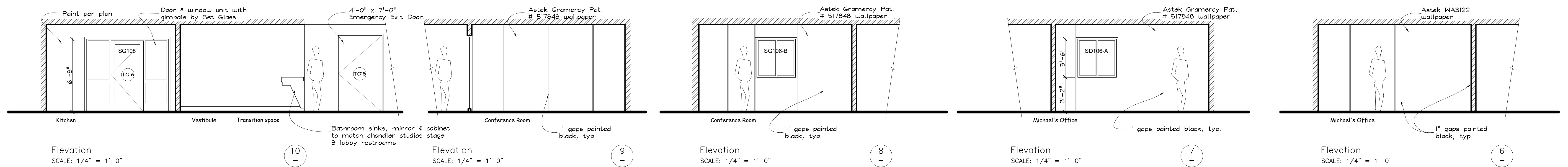
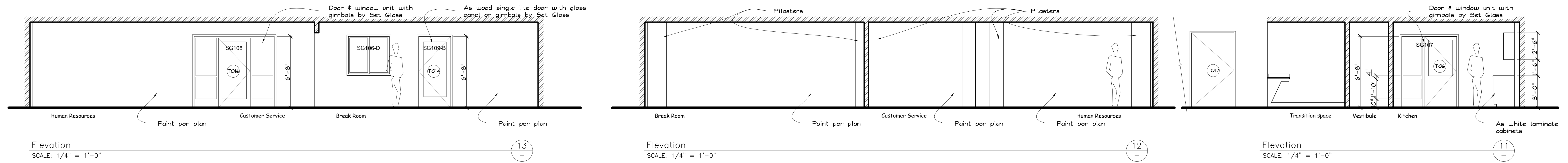
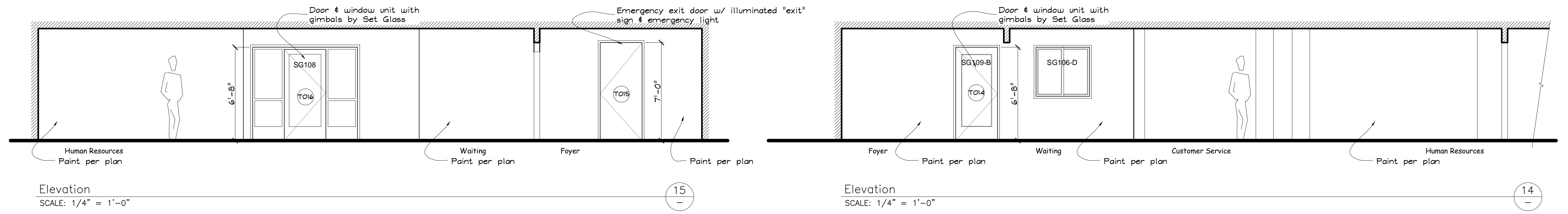
the office
PAPER COMPANY

Set: Office Plan

Greg Daniels, Exec. Prod.	Ben Silverman, Exec. Prod.
Ken Kwapis, Director	Howard Klein, Exec. Prod.
Kent Zbornak, Prod. UPM	Michael Gallenberg, Prod. Des.
Angie Hamilton, Producer	Matt Flynn, Asst. Director
Randall Einhorn, S.P.	Steve Rosline, Set Designer
Dale Alexander, Asst. Dir.	Bobby Bednar, Cost. Coord.
Brad Lipson, Gaffer	Phillip Shea, Programmer
Liz Ryan, Asst. Director	Jeff Beck, Set Designer
Billy Arter, Transportation	

Stage: Loc: Stage 3
 Chandler: Studios
 Date: 4/12/2008
 Sheet: 2 of 6
 Scale: 1/4" = 1'-0"



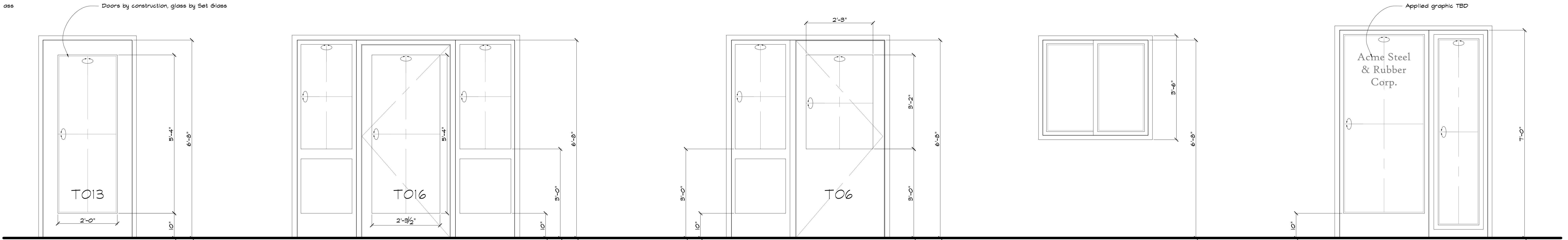
the office
PAPER COMPANY

Set: Office Elevations

Greg Daniels, Exec. Prod.	Ben Silverman, Exec. Prod.
Ken Kwapis, Director	Howard Klein, Exec. Prod.
Ken Zornak, Prod./UPM	Michael Gallenberg, Prod. Des.
Angie Hamilton, Producer	Matt Flynn, Art Director
Randall Einhorn, C.P.	Shawn Roalson, Set Designer
Dale Alexander, Key Grip	Bobby Bednar, Cost. Coord.
Brad Lipsch, Gaffer	Phillip Shub, Propmaster
Liz Ryan, Set Assoc. Director	Jeff Beck, Set Designer
Billy Arter, Transportation	

Stage: Stage B
Chandler Studios
Date: 4/12/2008
Sheet: 3 of 6
Scale: As Noted

NBC REVELLE DEEDLE DEE PROD.



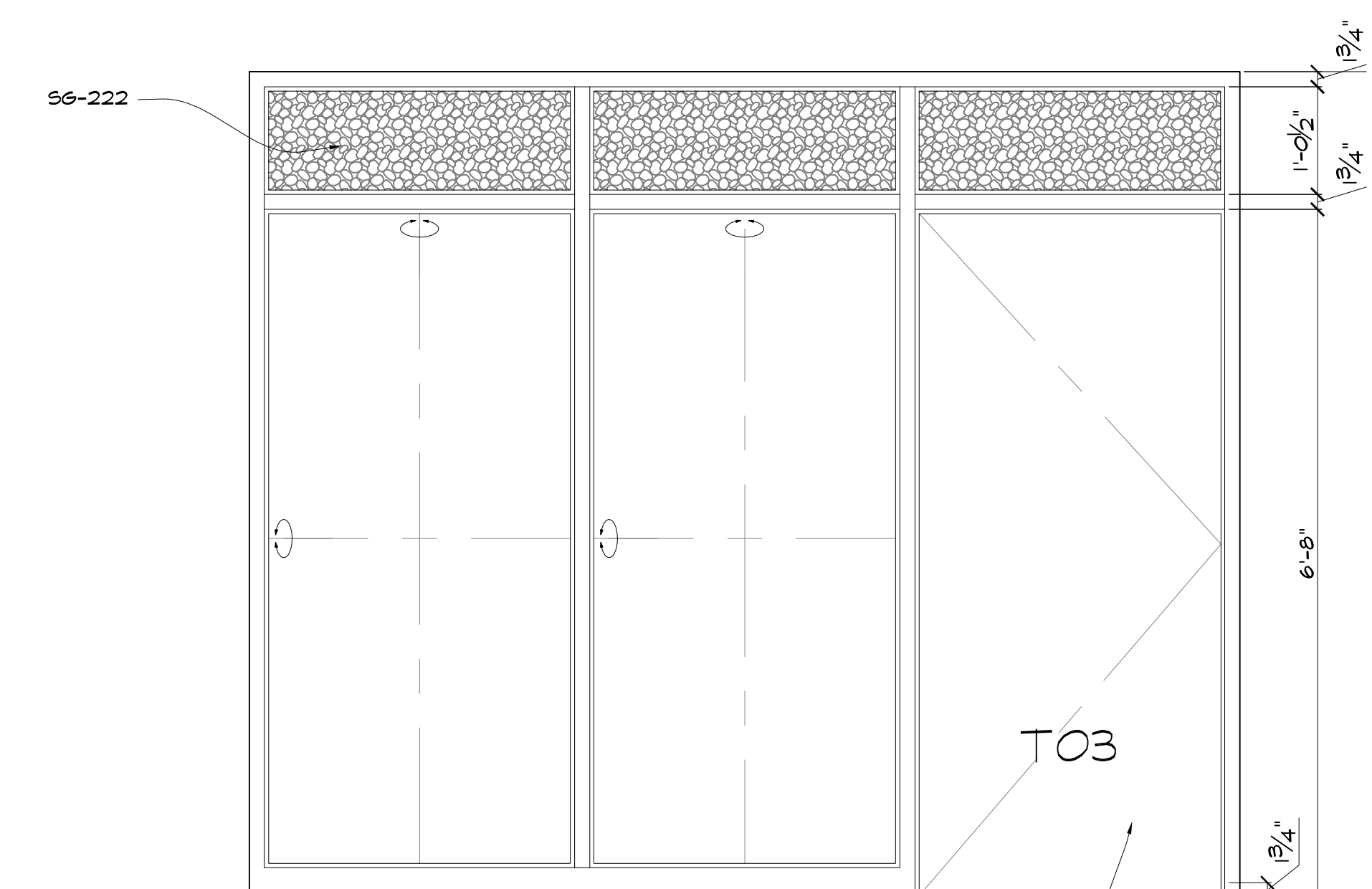
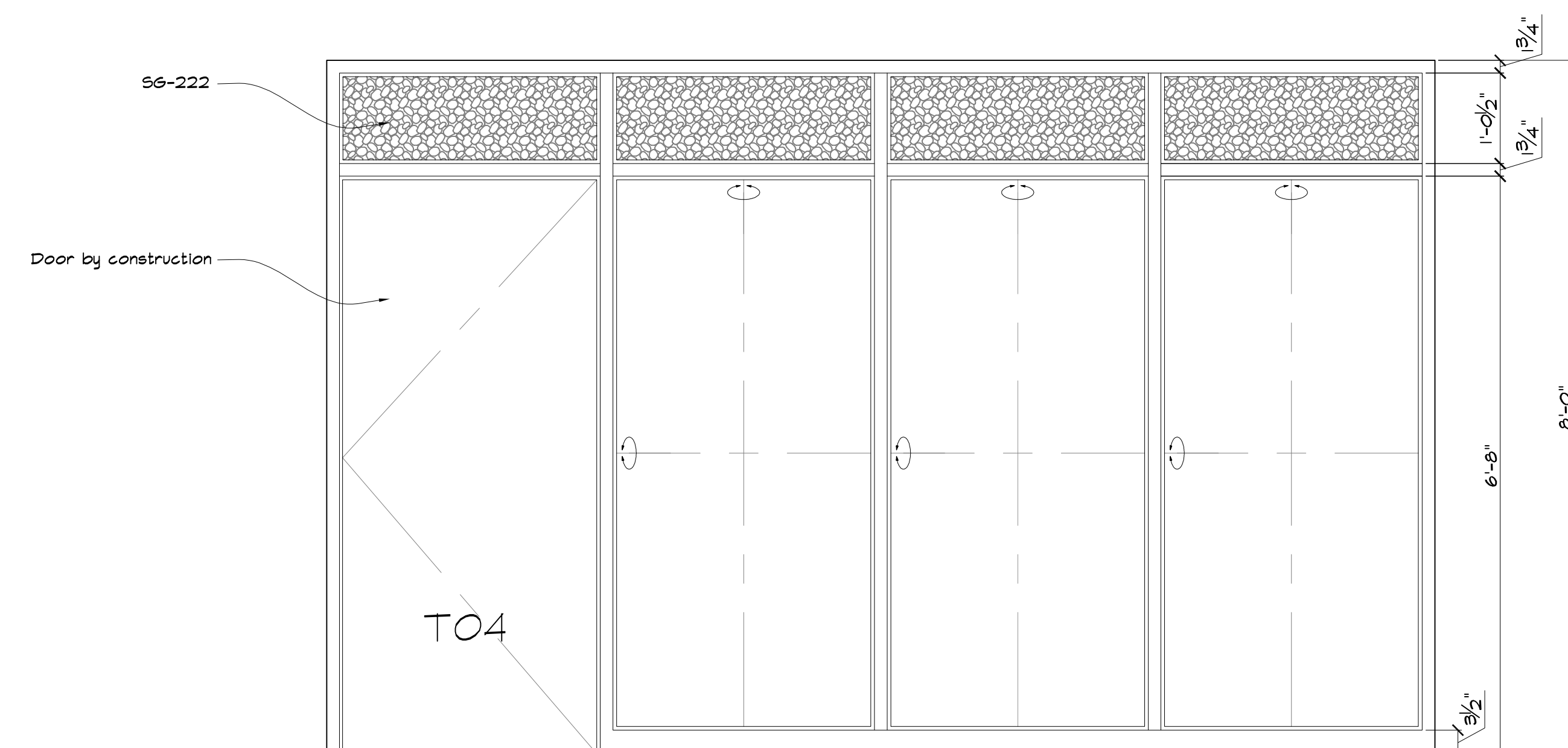
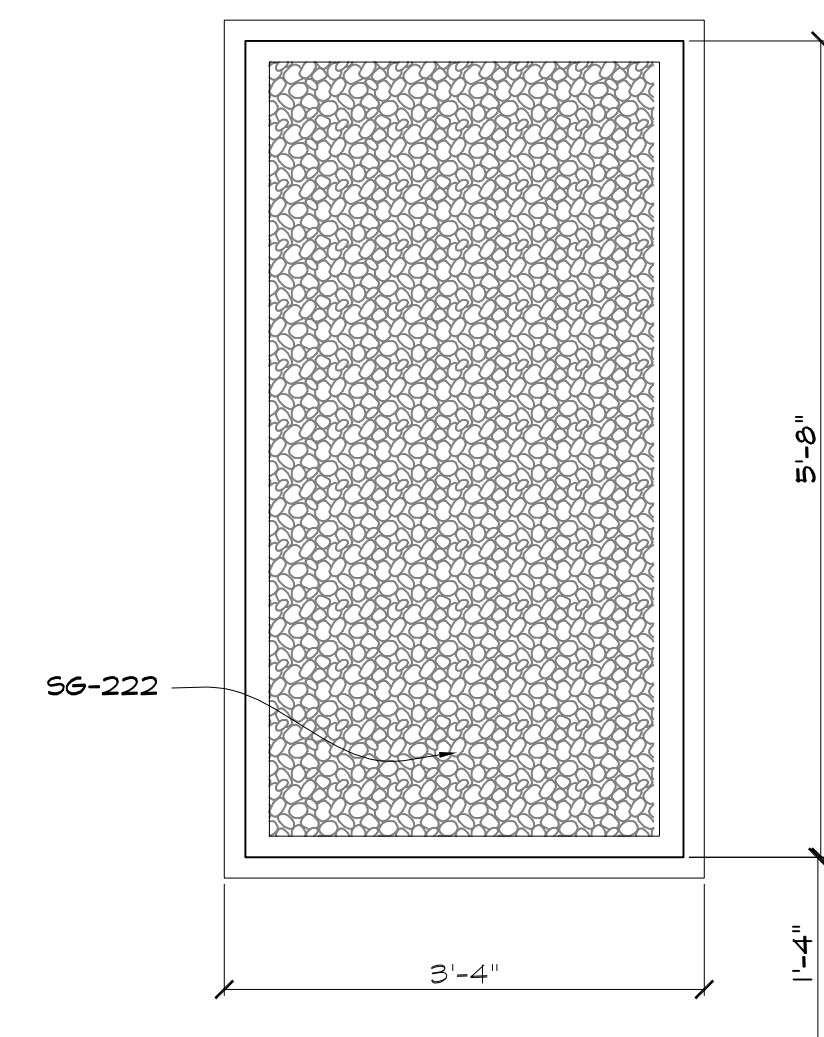
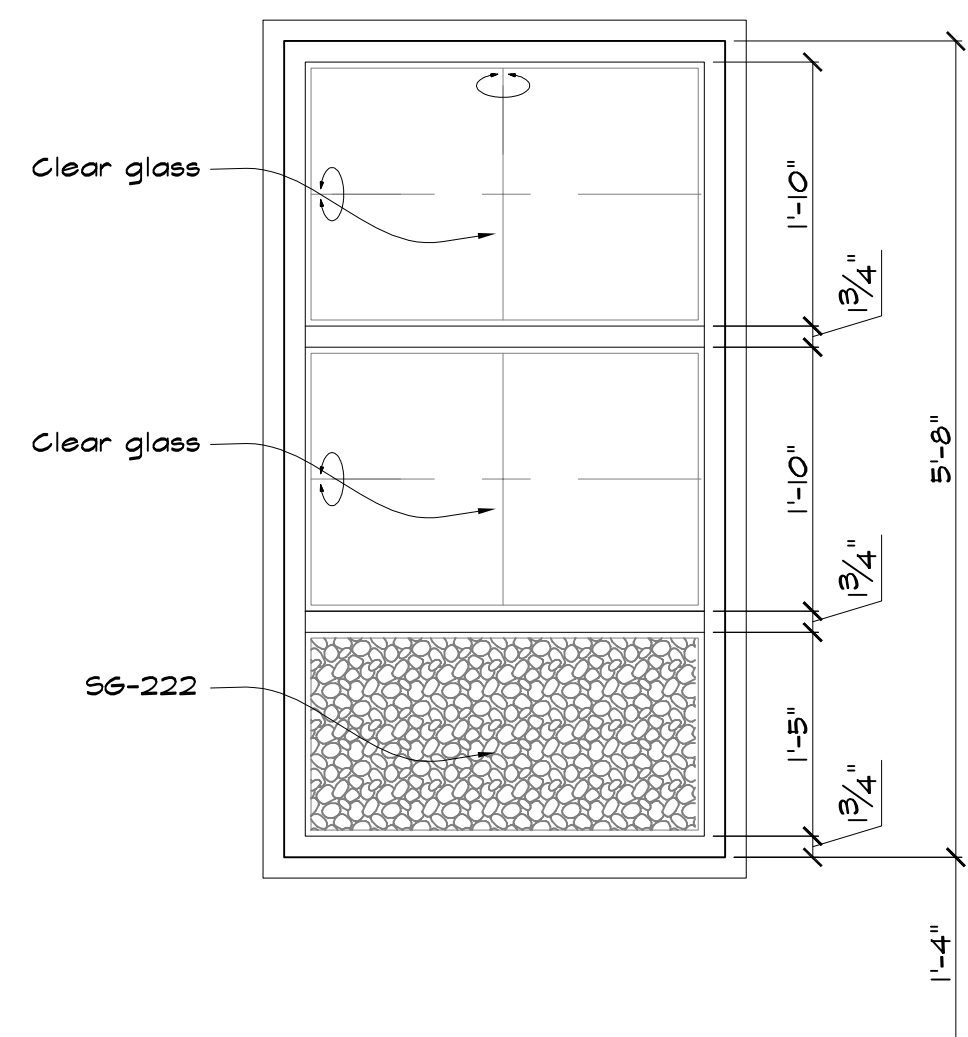
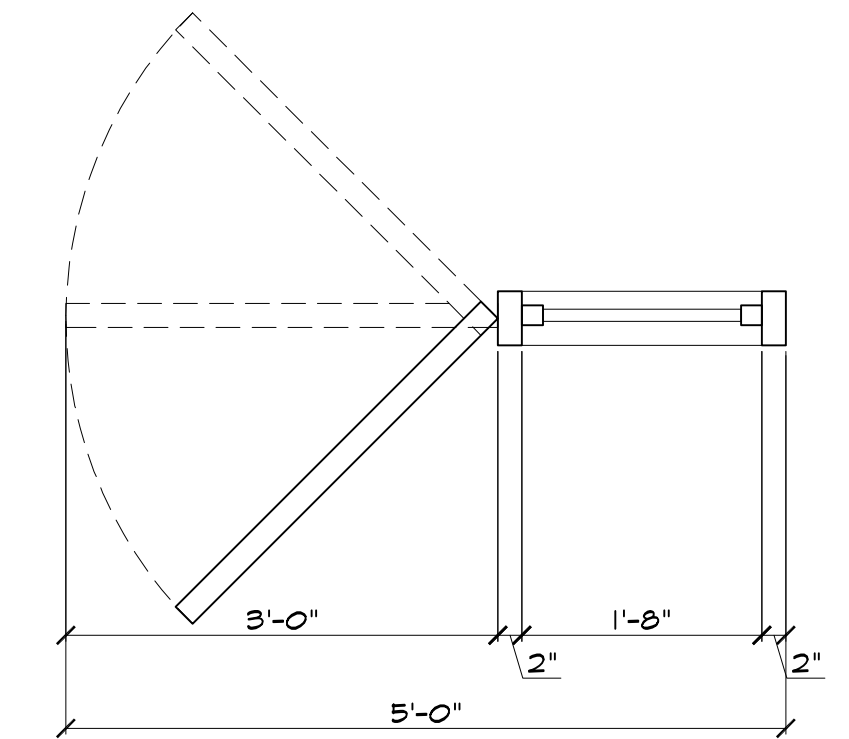
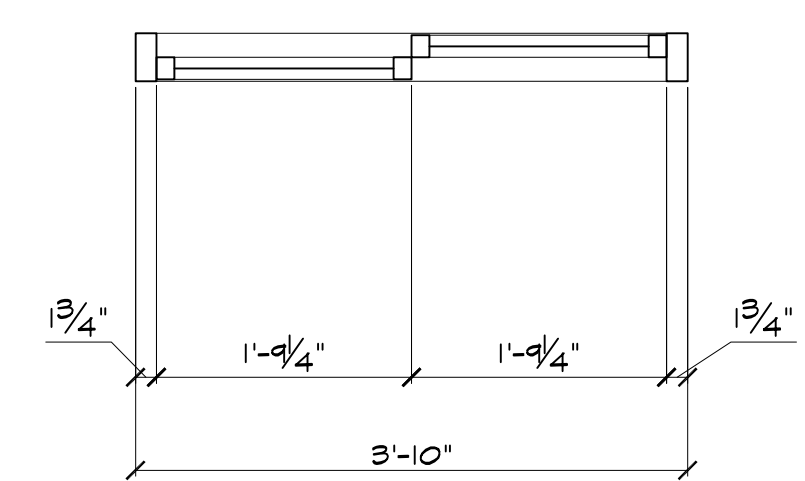
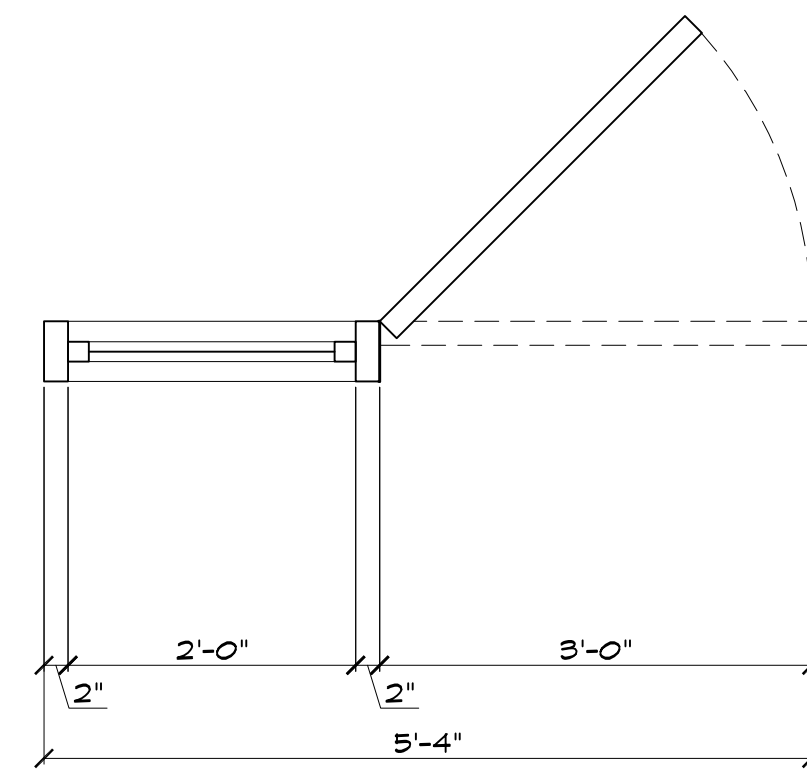
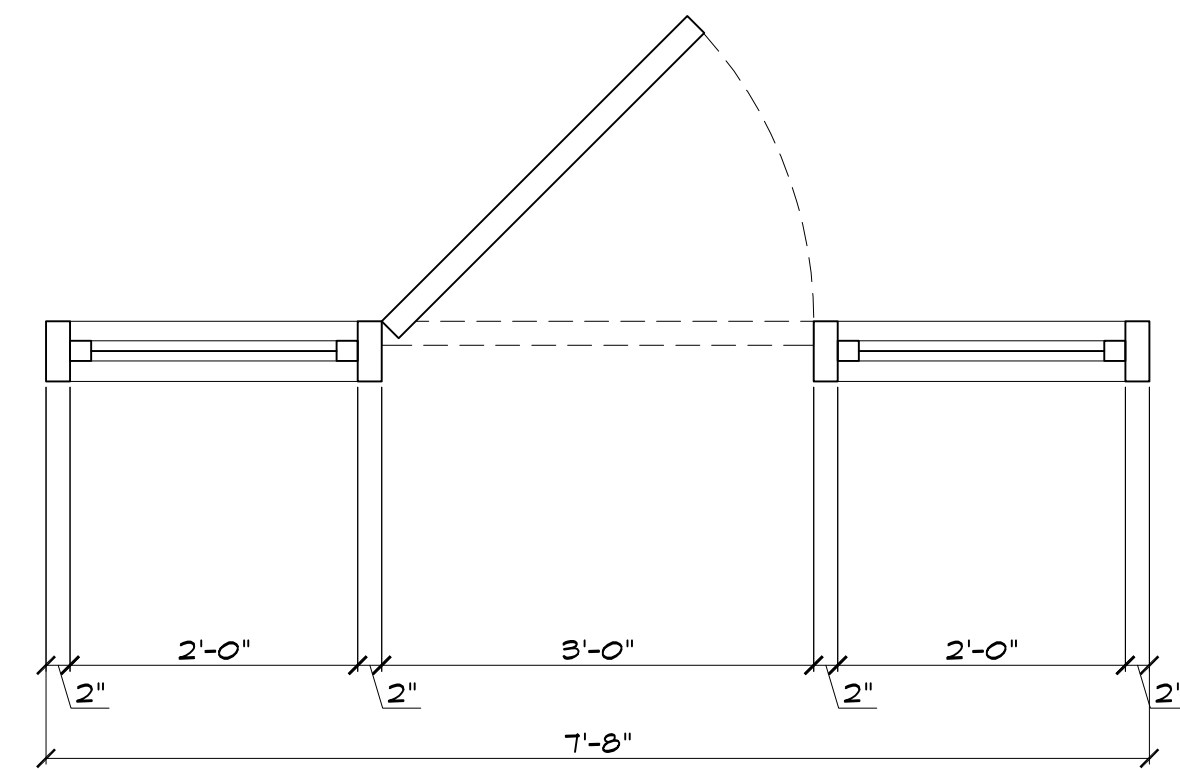
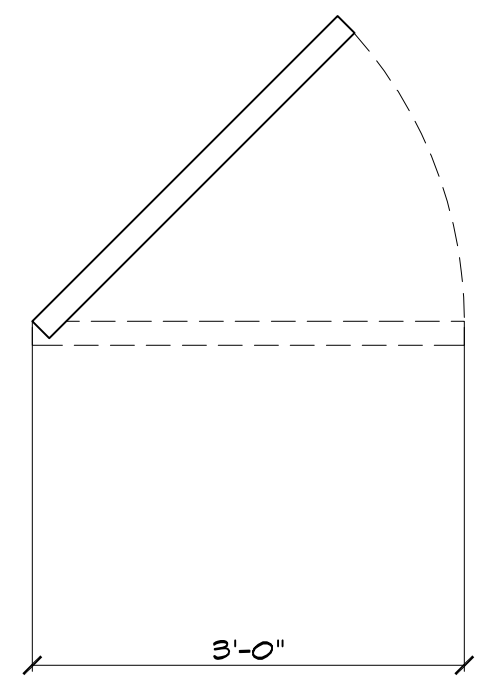
SG-109

SG-108

SG-107

SG-106

SG-105

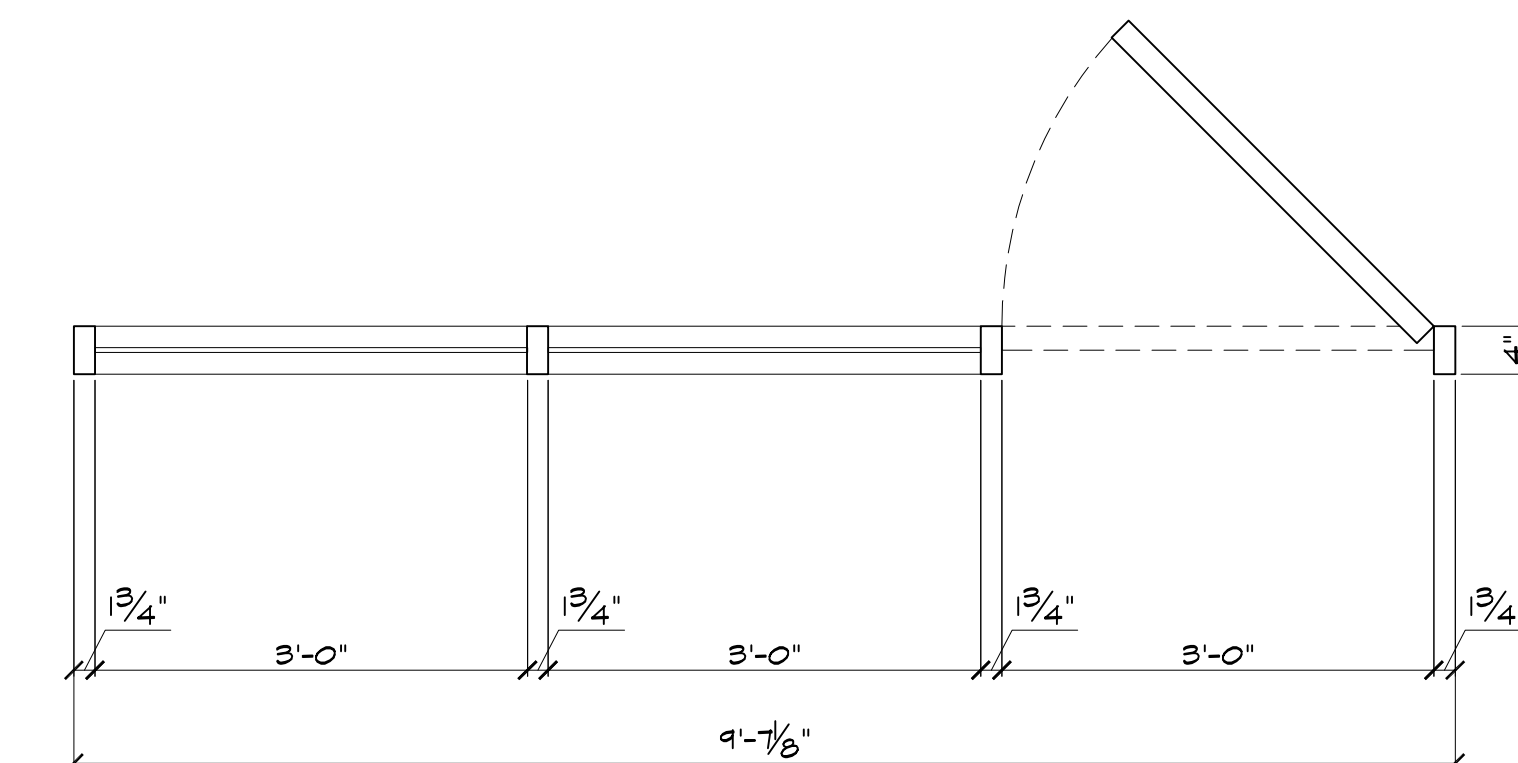
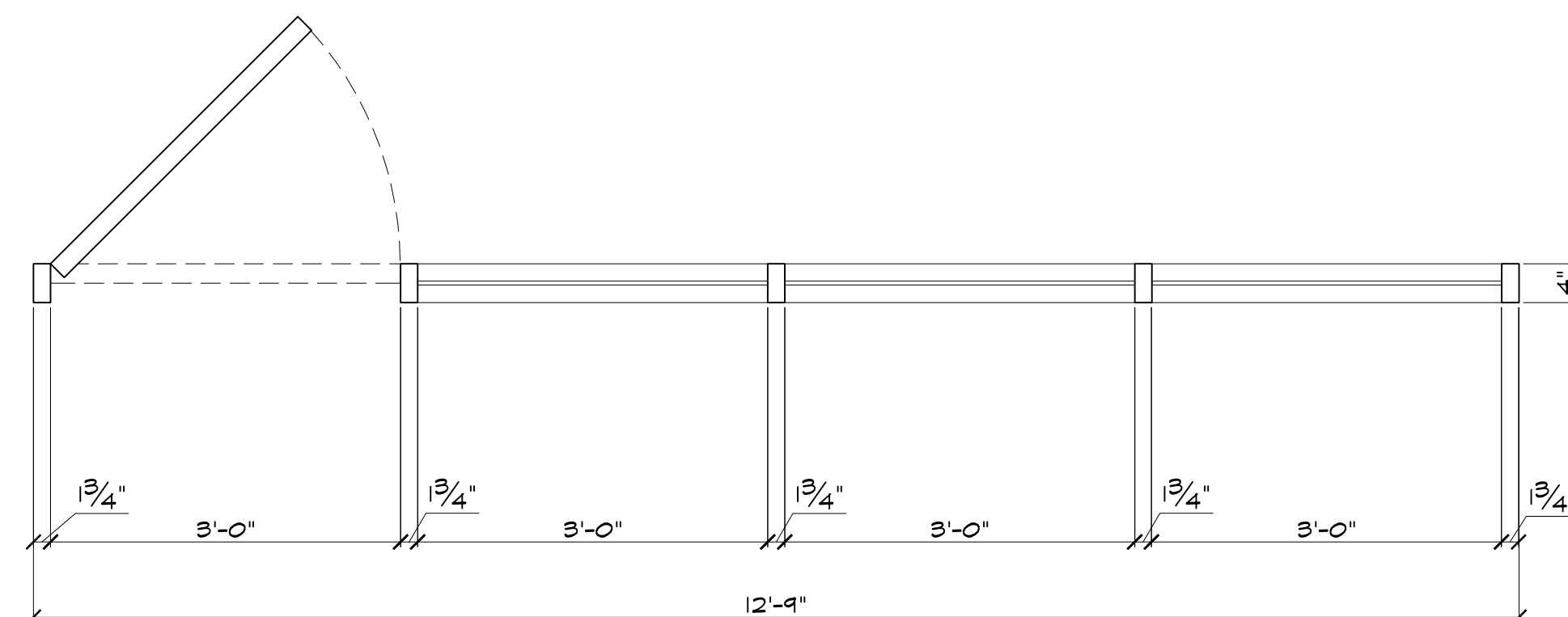
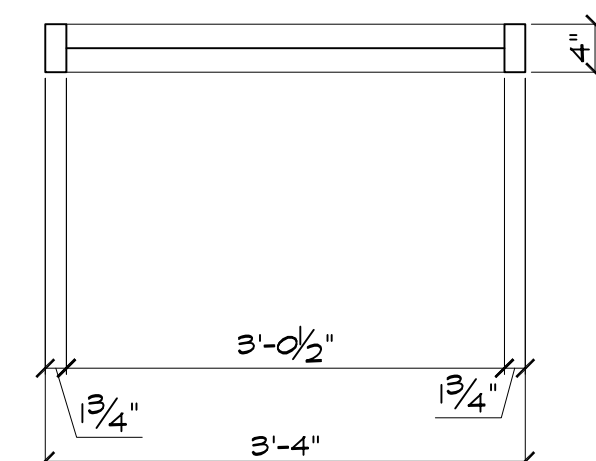
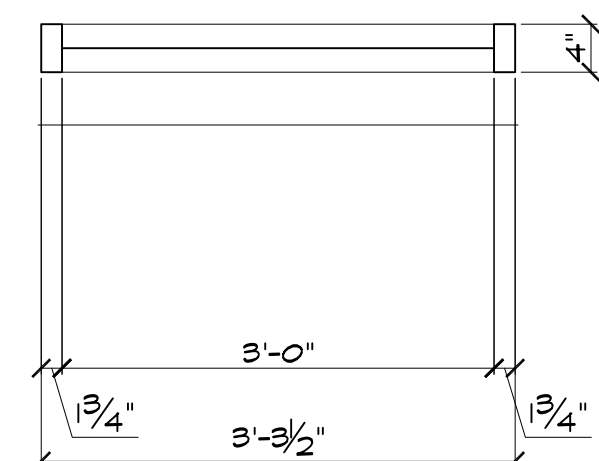


SG-104

SG-103

SG-102

SG-101

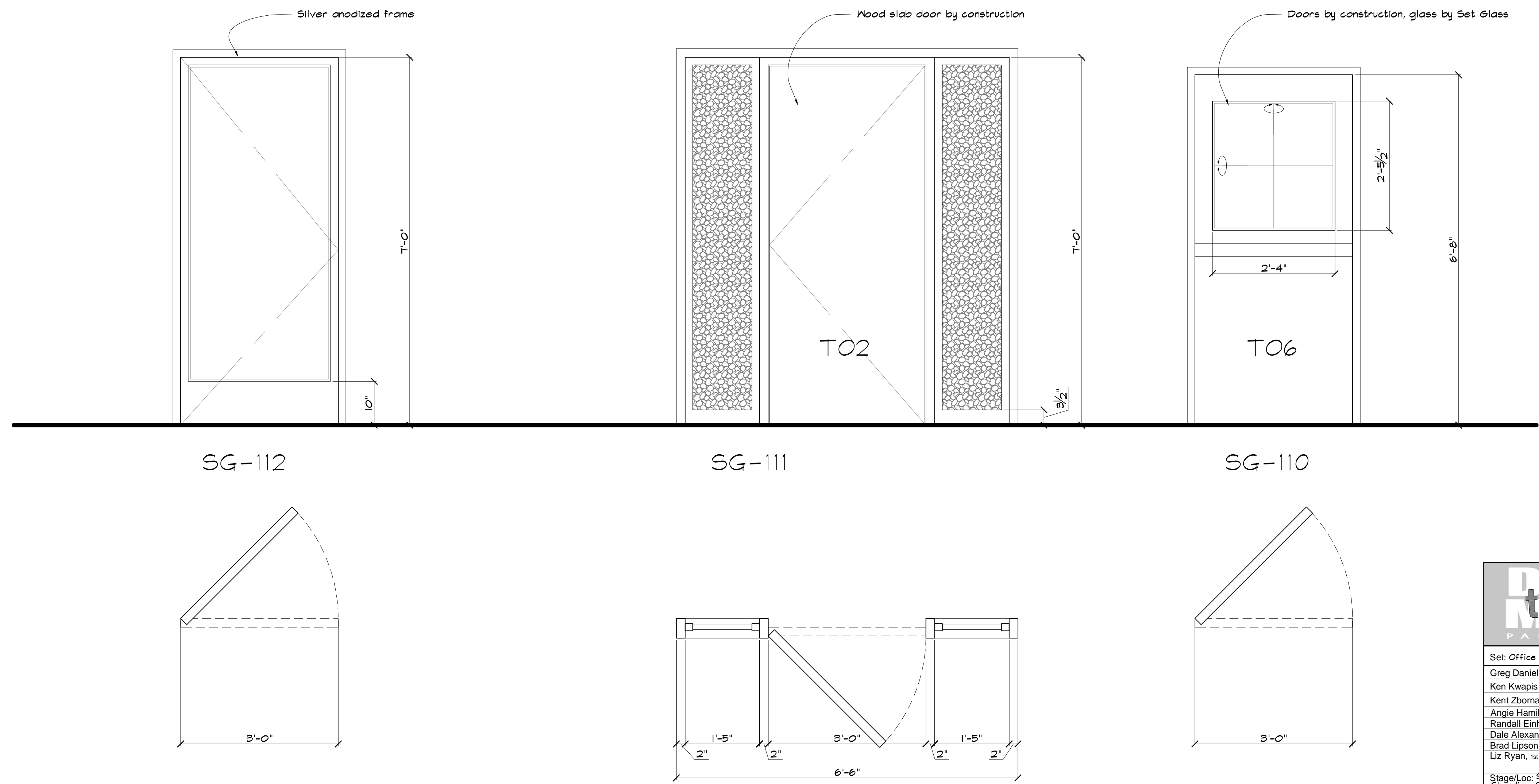


the office
PAPER COMPANY

Set: Office Door & Windows	
Greg Daniels, Exec. Prod.	Ben Silverman, Exec. Prod.
Ken Kwapis, Director	Howard Klein, Exec. Prod.
Kent Zbornak, Prod. LHM	Michael Gallenberg, Prod. Des.
Angie Hamilton, Producer	Matt Flynn, Art Director
Randall Einhorn, C.P.	Steve Rosaline, Set Designer
Dale Alexander, Key Grip	Bobby Bednar, Crane Coast
Brad Lipsch, Gaffer	Phillip Shels, Propmaster
Liz Ryan, 1st Asst. Director	Jeff Beck, Set Designer
Stage 101, Stage 3	Billy Arter, Transportation
Chandler Studios	Date: 4/12/2008
Sheet: 5 of 6	Scale: 3/4" = 1'-0"

Logos: NBC, REVELLE, DEEDLE DEE PROD.

CONSTRUCTION DOORS							
Elev#	Dwg Ref#	WIDTH	HEIGHT	FRAME	METAL FINISH	Level Set w/ Closure	NOTES
19	TO1	3'-0"	6'-8"	-	Brshed.StlArod	Lever Set w/ Closure	
2	TO2	3'-0"	7'-0"	SG111	DK. BRONZE	Lever Set w/ Closure	
2	TO3	3'-0"	6'-8"	SG101	DK. BRONZE	Lever Set	
2	TO4	3'-0"	6'-8"	SG102	DK. BRONZE	Lever Set	
3	TO5	3'-0"	6'-8"	SG110	DK. BRONZE	Crash Bar	Small window.
3	TO6	3'-0"	6'-8"	SG107	DK. BRONZE	Push/Pull w/ Closure	Window
16	TO7	3'-0"	6'-8"	-	DK. BRONZE	Knob set	
F/A	TO8	3'-0"	6'-8"	-	DK. BRONZE	Knob set	
16	TO9	2'-8"	6'-8"	-	DK. BRONZE	Push/Pull w/ cl.	WITH BOTTOM VENT
16	TO10	2'-8"	6'-8"	-	DK. BRONZE	Locking Knob set	WITH BOTTOM VENT
16	TO11	2'-8"	6'-8"	-	DK. BRONZE	Push/Pull w/ cl.	WITH BOTTOM VENT
16	TO12	3'-0"	6'-8"	-	DK. BRONZE	Lever Set w/ Closure	
2	TO13	3'-0"	6'-8"	SG109A	DK. BRONZE	Lever Set	Full window
14	TO14	3'-0"	6'-8"	SG109B	DK. BRONZE	Lever Set	Full window
15	TO15	3'-0"	7'-0"	-	Brshed.StlArod	Lever Set w/ Cl.	EMERGENCY EXIT DOOR
15	TO16	3'-0"	6'-8"	SG108	DK. BRONZE	Push/Pull	Window
F/A	TO17	4'-0"	7'-0"	-	DK. BRONZE	Knob set	EMERGENCY EXIT DOOR
F/A	TO18	4'-0"	6'-8"	-	DK. BRONZE	Knob set	
16	TO19	3'-0"	6'-8"	-	DK. BRONZE	Locking Knob set	Keyed to match TO10
DOORS & WINDOWS BY SET GLASS							
#	WIDTH	HEIGHT	DOOR				NOTES
2	SG101	9'-7"	8'-0"	TO3	DK. BRONZE		Transom units SG222 glass
2	SG102	12'-9"		TO4	DK. BRONZE		Transom units SG222 glass
1	SG103	3'-4"	5'-8"				SG222 Glass
2	SG104	3'-4"	5'-8"				Bottom Unit SG222 Glass
20	SG105	5'-0"	7'-0"			Brshed.StlArod Pull/Pull, Deadbolt, Mail slot	Double Action, side light
2,14	SG106	3'-10"	3'-6"				
3	SG107	5'-4"	6'-8"	TO6	DK. BRONZE		
15	SG108	7'-8"	6'-8"	TO16	DK. BRONZE		Frame w/ side light
2	SG109	2'-9"	5'-4"	TO13			Glass Only
3	SG110	2'-4"	2'-5 1/2"	TO5			Glass Only
2	SG111	6'-6"	7'-0"	TO2	DK. BRONZE		SG222 Glass, two sidelights.
4	SG112	3'-0"	7'-0"		DK. BRONZE	Pull/Pull, Deadbolt, Mail slot	Double Action, Match height to TO2



the office
PAPER COMPANY

Set: Office Door & Windows	
Greg Daniels, Exec. Prod.	Ben Silverman, Exec. Prod.
Ken Kwapis, Director	Howard Klein, Exec. Prod.
Kent Zbornak, Prod. LHM	Michael Gallenberg, Prod. Des.
Angie Hamilton, Producer	Matt Flynn, Asst. Director
Randall Einhorn, C.P.	Steve Rosline, Set Designer
Dale Alexander, Key Grip	Bobby Bednar, Cost. Coord.
Brad Lipsch, Gaffer	Phillip Shels, Propmaster
Liz Ryan, Asst. Director	Jeff Beck, Set Designer
Stage: Stage 3	Billy Arter, Transportation
Chandler Studios	Date: 4/12/2008
Sheet: 6 of 6	Scale: 3/4" = 1'-0"

Logos for NBC, REVELLE, and DEEDLE DEE PROD.







